

# GALLOPER-SANDS

CONTEMPORARY COLLECTIONS

AUTUMN 2021



*Gold, 2021. Oil on board. 1220mm*

TESSA NEWCOMB

*Where I Belong*

GS

GALLOPER-SANDS

*Fine Art & Artisan Crafts*

[www.gallopersands.co.uk](http://www.gallopersands.co.uk)

## Introduction : *Where I Belong*

As a child, growing up in Great Glemham, I had a recurrent dream. It focused on an oak tree in the corner of a large, rising field. The soil was soft and sandy; and the crop was thin. It may have been barley. Small wildflowers and weeds were also scattered across otherwise bare earth. It was a beautiful view : the mighty oak, the soft soil and the ascendant land. But what made the dream so memorable and exciting was an additional detail. Amid the barley shoots and weeds was another crop. Poking up through the sand were dozens, perhaps hundreds of small metal Dinky toys : cars, jeeps, lorries, trucks and fire engines. Heaven !

The waking moments that followed were tantalizing. At first I would sleepily think that the dream was real: that I could locate the field in my mental map of our farm – and what treasures awaited ! But as sleep receded, that sureness slipped away. I would go through the field names: New Road, Kiln Piece, Dairy Maid, Bachelors. They all felt nearby, close. But as my eyes opened, it became clear that the field would not fit amongst them. It had gone again. But the possibility that it did exist or that next time I might really find it was deeply inspiring. It left me with a feeling that if I just walked a little bit further or turned another hedgerow corner, I might find the oak, the field – and the toys. I mention this memory because it sums up what I think, personally, is so captivating about Tessa Newcomb's paintings. They invite the viewer to take a step or two in the reverse and slightly more magical direction : from reality to the imagined. For the subjects of Tessa's work – the local river valleys, the fens, village scenes, people out walking with pets, gardens, seashores, allotments, cafes, fishing boats, markets and home – are simultaneously reassuringly familiar but also distinctly different from the viewer's own reality. They are brought to life by Tessa's imagination and invite the viewer to step inside her world : East Anglia as she experiences it.

It has been one of the great pleasures of my life in the arts to be able to collaborate with Tessa over the past few decades. We first met through a commission to paint murals in a cottage next to Great Glemham church – including a small oil painting on board of my home farm. This led to a small exhibition in 2003 of works by Tessa, myself and my late grandmother, Fidelity Cranbrook. This, in turn, became the seed that grew into The Alde Valley Spring Festival. Tessa's paintings have been at the heart of the Festival and life at the farm for over 15 years as it has grown into a painters' place : a home for the arts as well as myself and many guests - and a surprisingly large number of chickens, ducks, sheep, cats, dog and pigs. A recent painting *Everything You Need* summed this up beautifully. I think that the secret of Tessa's work is that it is so deeply and personally true to place. She catches the subtle and elusive sense of belonging that many of us quietly seek or hope for. In beholding Tessa's paintings, the observed and imagined become intertwined and we step into her world. In doing so, for a few moments, we gain that sense of belonging. To be able to impart this through painting is a wonderful gift; and to share it more broadly in the form of her new *Where I Belong* is a dream come true ! This catalogue offers a selection of works from Tessa's new book, alongside others which celebrate her longstanding association with White House Farm through the Alde Valley Spring Festival and our new Galloper-Sands residencies. It is a joy to bring together so many paintings from the farm and broader Suffolk landscape – which, through her work, has become her home.

Jason Gathorne-Hardy. White House Farm, Great Glemham. Autumn 2021.



*Gold, 2021 \**

H915mm W1220mm

Oil on board

£5,850

\* This beautiful painting was created in the autumn of 2021 for Galloper-Sands Contemporary Collections as part of Tessa Newcomb's ongoing farm residency.





*Returning of the Sun, 2021 \**

H460mm W455mm

Oil on card

£2,450

\* Painted in autumn 2021 for Galloper-Sands Contemporary Collections as part of Tessa Newcomb's ongoing farm residency.



*Jigsaw*

H900mm W1150mm

Oil on board

£4,250





*On a Good Day, 2020 \**

H460mm W610mm

Oil on board

£1,950

\* P 64, *Where I Belong*.



*They Didn't Notice Us, 2020 \**

H460mm W610mm

Oil on board

£1,950

\* P 72, *Where I Belong*.





*When Life Gives You Apples, 2020 \**

H510mm W610mm

Oil on board

£1,550

\* P 36, *Where I Belong* : Chapter 3 St James Village Orchard.





*Cornflowers and Chard, 2021 \**

H460mm W610mm

Oil on board

£1,950

\* Painted in a Suffolk garden in 2021.



*Plot 64B \**

H175mm W170mm

Oil on board

£495

\* Page 62, *Where I Belong* : Chapter 5 Plot 64.





*A Keen Interest* \*

H180mm W205mm

Oil on board

£485

\* Page 88, *Where I Belong*.



*A British Show*

Oil on board

H155mm W230mm

£525





*Watching Others \**

H150mm Wroomm

Oil on card

£385

\* From a series of paintings about Dog Shows. Others feature Chapter 7 of *Where I Belong*.



*The Waiting Man* \*

H220mm W180mm

Oil on card

£495

\* From Paris.





*He Loved Pears, 2020 \**

H240mm W240mm

Oil on board

£850

\* P 109, *Where I Belong*.



*Picking* \*

H115mm W170mm

Oil on board

£415

\* Page 67, *Where I Belong*.



*The Neighbour* \*

H75mm W125mm

Oil on board

£385

\* Page 122, *Where I Belong*.





*We Watch Different Things, 2019 \**

H205mm W275mm

Oil on board

£950

\* P 86, *Where I Belong*.



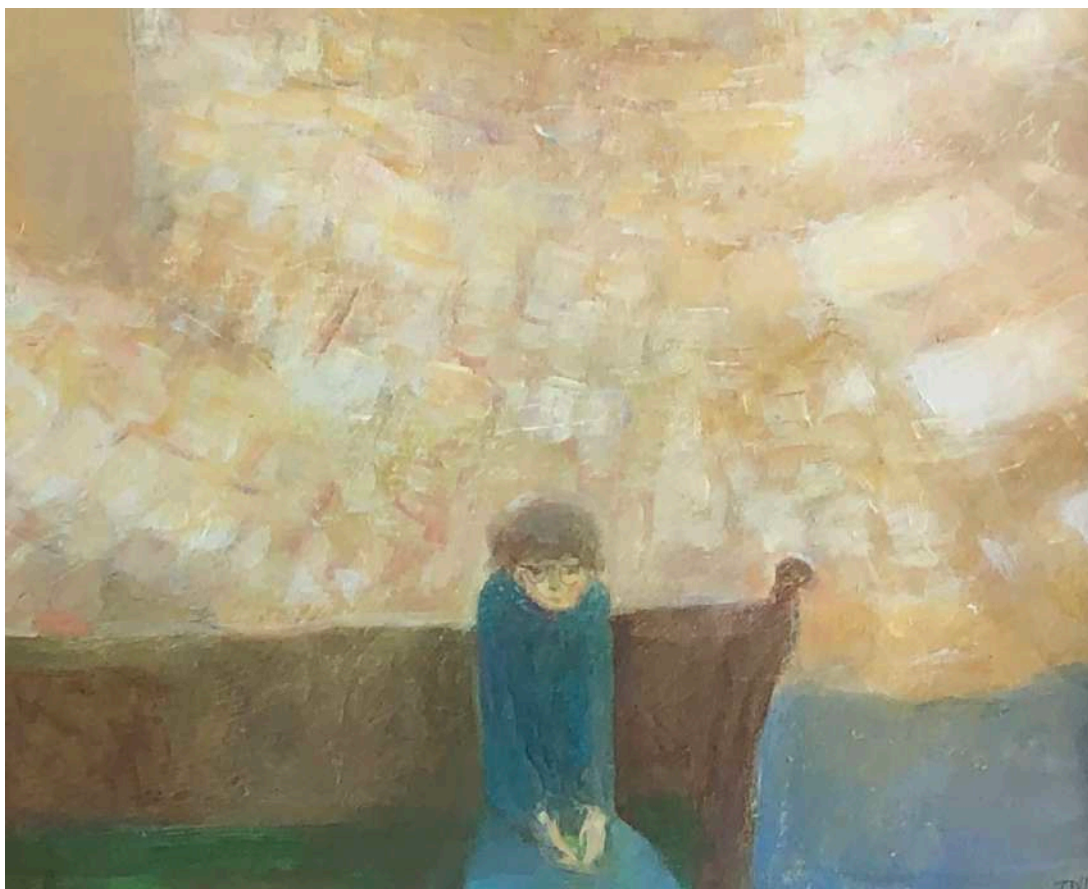
*Understanding* \*

H100mm W115mm

Oil on card

£385

\* Page 94, *Where I Belong*.



*Having a Sit \**

Oil on card

H180mm W210mm

£495

\* Page 79, *Where I Belong*.





*Best Bitch \**

H190mm W165mm  
Oil on board  
£485

\* Page 90, *Where I Belong*.



*The Alley, 2020 \**

H265mm W140mm

Oil on card

£545

\* P 99, *Where I Belong*.



*Cowslips*

H245mm W330mm

Oil on board

£950





*Home, 2021 \**

H530mm W1220mm

Oil on board

£4,950

\* Painted in 2021 as part of Tessa's ongoing Farm Residency with Galloper-Sands Gallery.



*September Garden, 2021 \**

H460mm W610mm

Oil on board

£1,950

\* Painted in 2021 as part of Tessa's ongoing Farm Residency with Galloper-Sands Gallery.





*Suffolk Savannah, 2021 \**

H790mm W725mm

Oil on board

£4,850

\* Painted in 2021 as part of Tessa's ongoing Farm Residency with Galloper-Sands Gallery. The view is from the Horsebox Studio parked beside a hedge on the north edge of Rookery Field. The grass on the field was left to grow long in summer 2021 to support populations of grasshoppers, butterflies and moths which fed on overgrown grasses and yarrow flowers. As autumn approached, the stems of the grasses, docks and yarrow flowers all dried to golden rust colours. The field is frequented by woodpeckers, swallows, bats and visitors to the farm





*The Boatyard* \*

H305mm W323mm

Oil on board

£1,200

\* A scene from a Woodbridge boatyard.



*Harebells* \*

H460mm W610mm

Oil on board

£1,950

\* Painted from the Suffolk coast.



*Sea Holly Drying on the Beach* \*

H420mm W535mm

Oil on board

£1,850

\* Page 60, *Where I Belong*. Inspired by paintings of John Nash. Previously exhibited as part of Poetry in Aldeburgh in 2019 as part of the group show *Purslane, Peas & Bladderwrack* with Alice-Andrea Ewing and Perienne Christian.





*Out of the Woods*

H382mm W480mm

Oil on board

£1,450



*Lake, 2021 \**

H915mm W1220mm

Oil on board

£5,450

\* This painting was created in the autumn of 2021 for Galloper-Sands Contemporary Collections as part of Tessa Newcomb's ongoing farm residency. The painting is of one of several new lakes created in 2020 in the floodplain of the River Alde at the farm, to support birdlife and enrich the ecology of the Upper Alde Valley.



*Sunday (Glemham), 2021*

Hroomm W200mm

Oil on board

£425

This painting shows the farm's flock at rest on a Sunday with our old Jacob ewe in the foreground.





*Sticks*

H360mm W620mm

Oil on board

£1,750



*Wednesday, 2021 \**

H250mm W6300mm

Oil on board

£1,450



*Passing, 2021 \**

H130mm W155mm

Oil on board

£425





*The Neighbour's Garden*

H200mm W240mm

Oil on board

£425

Galloper-Sands is the online gallery for The Alde Valley Spring Festival Ltd

Company No 7592977      [www.aldevalleyspringfestival.co.uk](http://www.aldevalleyspringfestival.co.uk)

White House Farm, Great Glemham, Suffolk IP17 1LS

E [enquiries@galloper-sands.co.uk](mailto:enquiries@galloper-sands.co.uk) T [00 44] 1728 663 531

[www.galloper-sands.co.uk](http://www.galloper-sands.co.uk)