

GALLOPER-SANDS

SUMMER EXHIBITIONS



Seed Heads on a Frosty Morning H1000mm W1200mm

RUTH STAGE

Into the Light : Exploring the River Alde

GS

GALLOPER-SANDS

Fine Art & Artisan Crafts

www.gallopersands.co.uk

Introduction

Into the Light : Exploring the River Alde

Julian Tennyson, in his book *Suffolk Scene*, wrote “*The more I see of Suffolk, the more do I realize that she owes all the best part of her character to her rivers.*” Later, he continues “*Near Little Glemham, the Alde splits into two branches, one of which goes through Great Glemham, Sweffling, Rendham, Bruisyard and Badingham .. ; the other through Marlesford, Parham, Framlingham, and on to Saxtead. The strip between these two branches is criss-crossed with little streams, and it is here that the trees are taller and thicker, the slopes more green and more luxuriant than anywhere else in Suffolk. The villages along the valleys are small and sheltered, the country is quiet and deserted ; it has a wildness that is rich, protected, almost soothing, quite different in its effect from the high plateaus towards the Waveney.*”

These sheltered inland valleys are the home of the River Alde : the places in which it rises and gathers itself from field drains and ditches to become three small streams : the Ore, Alde and Fromus. The combined tributaries gain a modicum of pace as the river flows beneath Langham Bridge near Blaxhall, with the Alde welcoming additional waters from the River Fromus and River Ore. Below Snape, the river expands once more. This time, it widens its boundaries and mixes with seawater to become a broad, meandering and often dazzling estuary, finally joining the North Sea at Shingle Street.

In this new residency collaboration we are working with the painter Ruth Stage to explore the course of the River Alde as it flows through the East Suffolk countryside, from its hidden beginnings near Badingham to join the broad estuary at Snape, before flowing on into the sea at Shingle Street. As it makes this winding journey through East Suffolk, the plant life and scenery along the river’s edges changes dramatically : from thickly vegetated hedgerows, pastures and woodland to tall reed beds and herb-rich salt marshes.

Working in egg tempera, Ruth’s paintings capture the changing scenery, looking into the light and portraying the rich and varied botany along the river’s margins as it is illuminated by bright summer sunshine, milky spring mists or sparkling winter frosts. The work illustrated in this catalogue represent the first gatherings from the residency. It is a beautiful collection of paintings.

Jason Gathorne-Hardy. White House Farm, Great Glemham, Suffolk. August 2023.



Rambling Brambles

Egg tempera on board
H800mm W1090mm

£4,200



Seed Heads on a Frosty Morning

Egg tempera on board

H1000mm W1200mm

£5,200



Ornamental Grasses at Twilight

Egg tempera on board
H450mm W600mm

£1,900



Summer Solstice

Egg tempera on board

H460mm W600mm

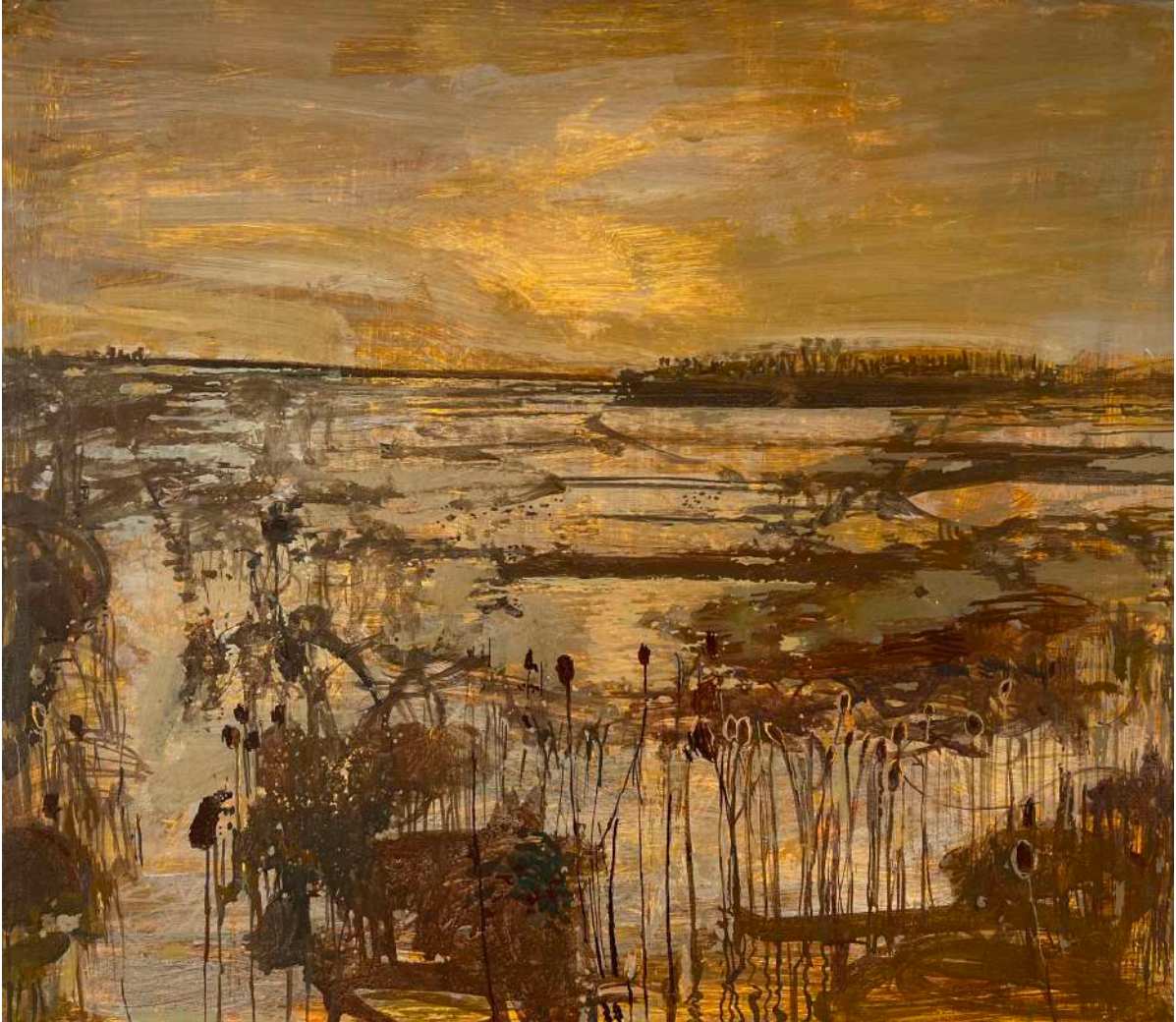
£1,900



Teasels in Sunshine

Egg tempera on board
H450mm W600mm

£1,900



Reed Beds in Evening Light

Egg tempera on board
H560mm W640mm

£2,000



Reed Bed Solstice

Egg tempera on board
H560mm W640mm

£2,000



Suffolk Creek

Egg tempera on board
H260mm W360mm

£800



Reed Beds With Mistletoe

Egg tempera on board
H260mm W350mm

£800



Reed Beds with Morning Mist

Egg tempera on board

H260mm W350mm

£800



Autumn Cultivation

Egg tempera on board
H260mm W350mm

£800

Gallopers-Sands is the online gallery for The Alde Valley Spring Festival Ltd
Company No 7592977 www.aldevalleyspringfestival.co.uk
White House Farm, Great Glemham, Suffolk IP17 1LS
E enquiries@gallopers-sands.co.uk T [00 44] 1728 663 531
www.gallopers-sands.co.uk