

GALLOPER-SANDS

SUMMER EXHIBITIONS



Rising Light, 2023. Watercolour on paper. H660mm W860mm.

PERIENNE CHRISTIAN

Alive in the Landscape

~

Dreaming a New Dream

GS

GALLOPER-SANDS

Fine Art & Artisan Crafts

www.gallopersands.co.uk

INTRODUCTION : JASON GATHORNE-HARDY

This collection of paintings and etchings *Dreaming and New Dream* has emerged from *Alive in the Landscape*, an ongoing residency collaboration with Perienne Christian. The residency has focused on work that relates to wild plants and the Suffolk shoreline near the settlement of Bawdsey on the Deben Peninsula. This low-lying land has a character all of its own. It is bordered on the one side by the North Sea, into which it yields its soft, sandy cliffs with the passing tides; and on the other by the meandering creeks and mudflats of the Deben Estuary.

Much of the raised, free-draining ground between the sea and the estuary is farmland, cultivated intensively and cropped each year. But running through this rump of agricultural land is a filigree network of verges, hedgerows, woodland, tracks and lanes that are a refuge for wildlife : small mammals, birds, insects and other invertebrates – and also for wild plants. Many of these, although considered weeds, have threads of folklore and histories of medicinal uses associated with them. From this perspective, many of these wild plants were once viewed more as companions in our landscape : a source of support and help, rather than ‘weeds’ to be controlled or eradicated. Beyond the worked land of the farms, the view gives way to mudflats and salt marshes along the river’s edge; and to a strip of slumping, sandy cliffs and shingle along the coast. These are home to rarer plants such as sea kale and the sea pea.

It is easy to think that this landscape is permanent – a view that is reinforced by its fixed appearance on ordinance survey maps. But in reality both edges of the Peninsula are in a state of continual flux. Along the coast, stretches of elevated ground are undermined by the action of the tides. The soft cliffs frequently collapse into the sea, revealing fossil sharks’ teeth or woolly mammoth bones. In other areas, the land is growing outwards and expanding as shingle is deposited in long drifts along the shoreline.

This endless interchange between land and sea, between solid ground and water, leaves lanes that seem to lead to nowhere and whole villages, harbours and towns that have vanished all together. They survive only in memory and modern-day myths. In this sense, the soft Suffolk shoreline can become almost a dreamscape : a territory in which everything has substance, but no permanence - a place in which the remembered and the imagined, the lost and the re-conceived all intermingle.

In more recent work, collectively titled *Dreaming a New Dream*, Perienne captures these subtle and elusive qualities of the Suffolk coast through paintings, etchings and monoprints. She brings these qualities to the fore, and in doing so, imbues the land and sea with bright and magical light. The watercolour paintings frequently hum with energy and vibrancy. The light within them is drawn partly from the moon and the stars, including the fiery orb of the sun, but also from the artist’s own imagination and her way of seeing her surroundings : a delicate yet robust living landscape populated by people, memories, birds, dreams and medicinal plants. As Perienne’s work grows in scale, depth and confidence, the viewer is increasingly drawn into her vision of the world – and it is a fascinating and deeply engaging place to behold. Her paintings, prints and etchings, as much as the plants that she studies, seem to guide the viewer on a journey, offering a window into a rich and visually vibrant world.

Jason Gathorne-Hardy. Curator - White House Farm. August 2023.

ARTIST'S STATEMENT : PERIENNE CHRISTIAN

Alive in the Landscape : Dreaming a New Dream

These works take their inspiration from the landscape on a wild and isolated Suffolk coastline. At the end of the road near Bawdsey there are magical ponds that lie just behind the sea wall and glisten with birdlife and magic.

'I sense 'otherness' when I am there, worlds beyond this world and this knowing brings a peace to the stuff of everyday life. When I paint I'm responding to both what I see and this 'otherness' and I allow the unseen elements to guide me. Sometimes I'm surprised by what appears, but it always carries an energy of place.

Perienne Christian.

GUEST WRITER : SARAH SALWAY

White House Farm and Galloper-Sands are both involved with an ongoing residency project called *Writing at Great Glemham*. This offers writers time to rest, reflect and work in the beautiful surroundings of the Upper Alde Valley – the home of George Crabbe, HW Freeman, Ronald Blythe, Hugh Barrett, George Ewart Evans and more recently Melissa Harrison.

We invited Sarah Salway, a previous recipient of a Writing Residency and also a guest writer for a previous solo show by Perienne Christian's, to respond to *Alive in the Landscape ~ Dreaming a New Dream*. The result is a wonderful selection of new poems that have come into being through this collaboration.

In tribute to the work of both the artist and the writer, we have gathered together images of Perienne's paintings and Sarah's poems in a separate publication *Alive in the Landscape ~ Dreaming a New Dream*, which is available in both digital and printed format. We have also reproduced three of the poems at the end of the catalogue.



Rising Light, 2023

Watercolour on paper

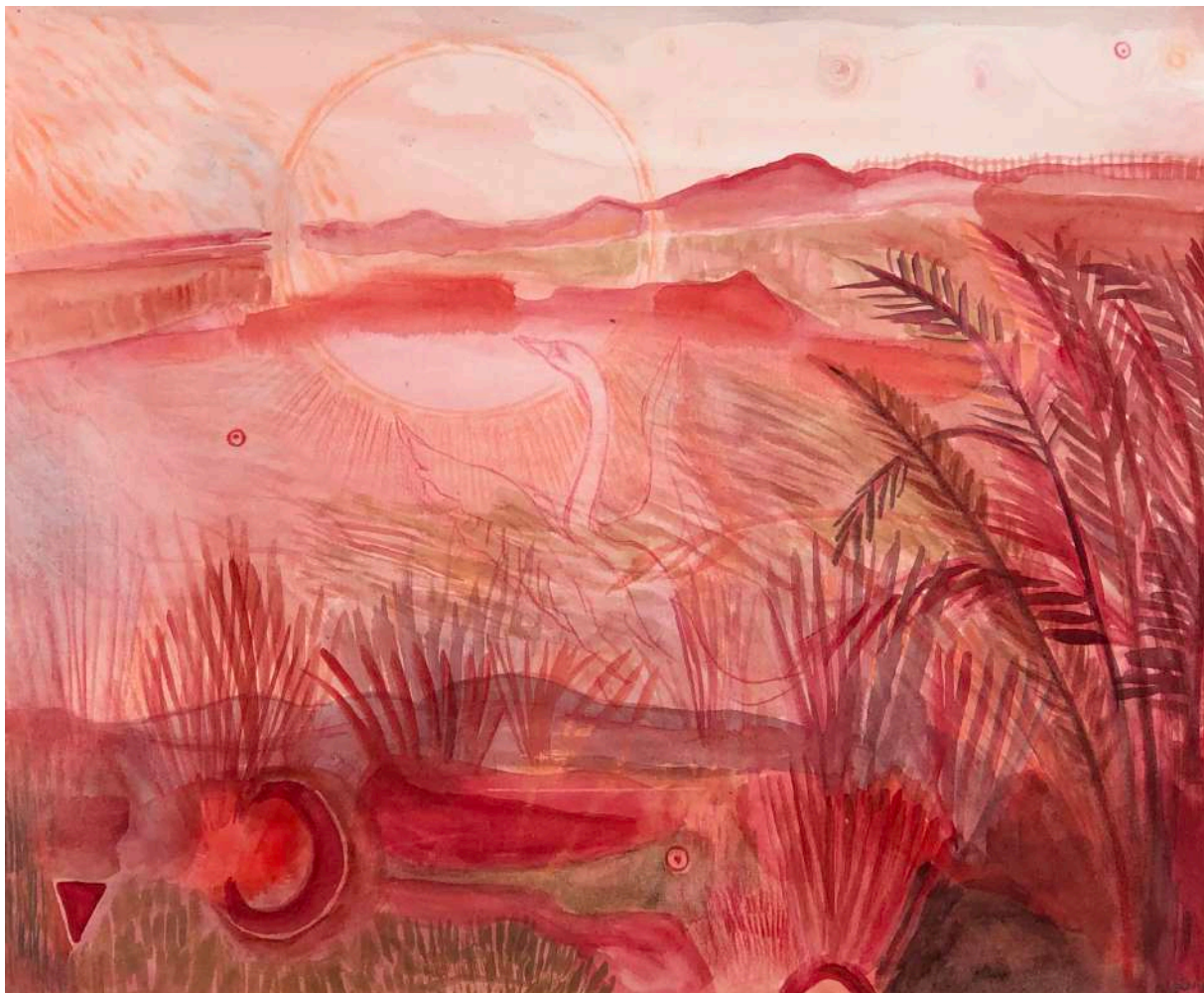
H660mm W860mm [framed]

£1,450



Rose Line, 2023

Watercolour on paper
H350mm W400mm [framed]
£650



Swan, 2023

Watercolour on paper
H350mm W400mm [framed]
£650



Hawthorn Fairy, 2023

Etching Edition of 10
H200mm W210mm
£155



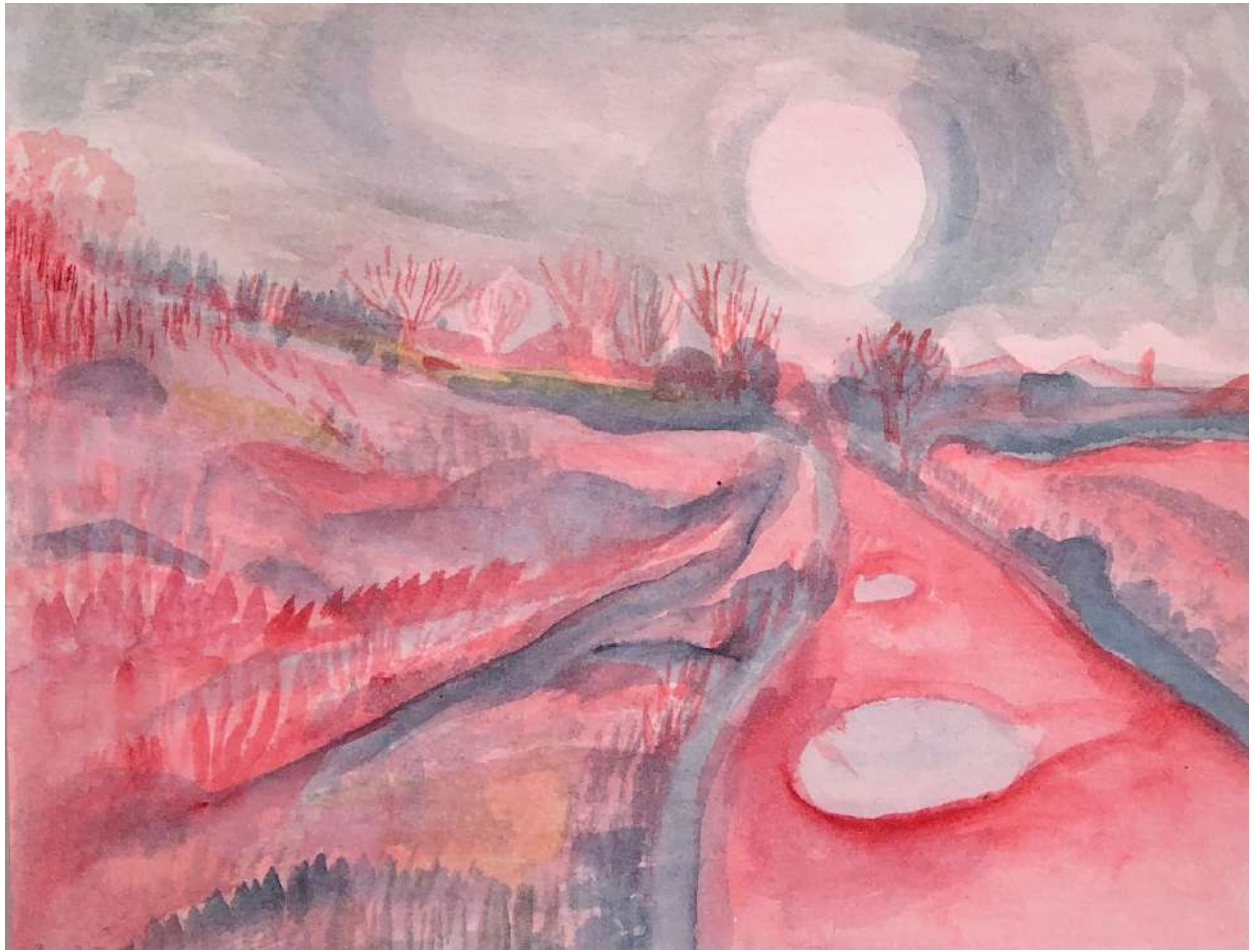
Held in the Landscape, 2022

Watercolour on paper
H720mm W850mm [framed]
£1,450



Shifting, 2021

Watercolour on paper
H280mm W380mm [framed]
£650



Reflection, 2022

Watercolour on paper
H240mm W290mm [framed]
£285



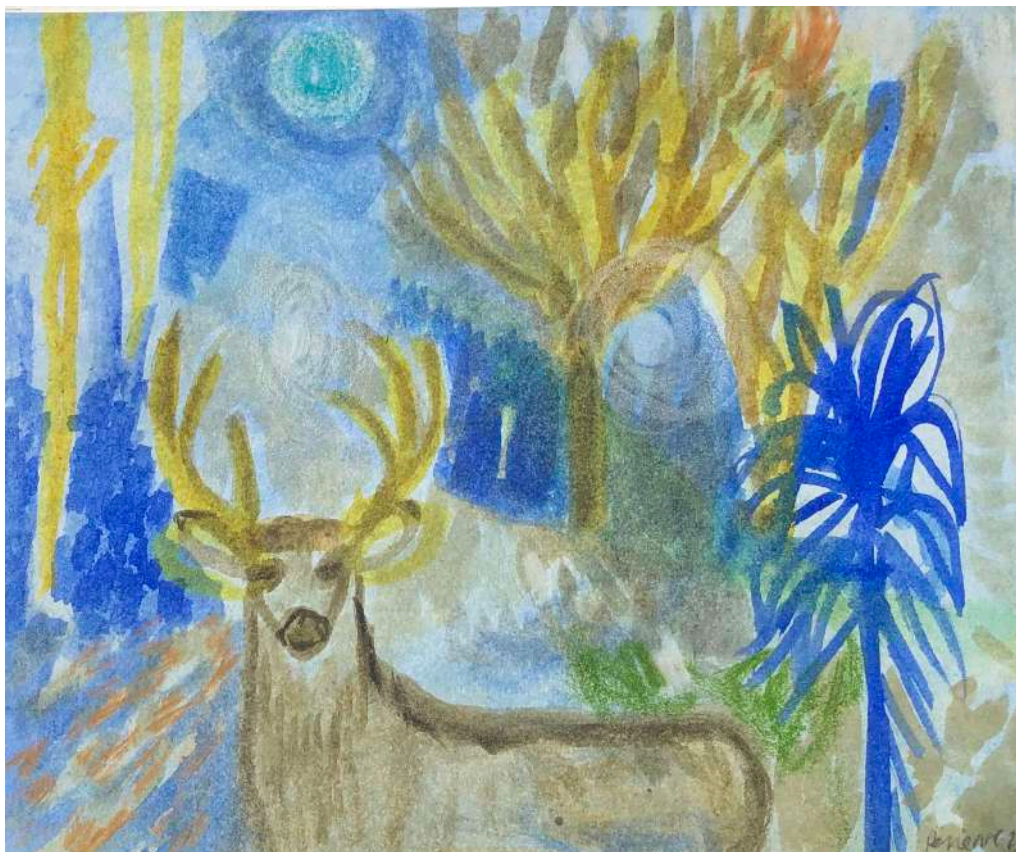
Structures of Silence, 2022

Watercolour on paper
H210mm W190mm [framed]
£165



The Songs They Sing, 2021

Watercolour on paper
H210mm W190mm [framed]
£165



Hello, 2022

Watercolour on paper

H190mm W210mm [framed]

£150



Nightbeams II, 2021

Watercolour on paper

H230mm W210mm [framed]

£215



Echoes of Silence, 2022

Watercolour on paper
H210mm W235mm [framed]
£185



Horsetail Dream, 2022

Etching with chine colle : Edition of 3
H240mm W290mm [framed]
£155 each [framed]



Red Moon, 2021

Etching : Edition of 5
H115mm W185mm [framed]
£145 each [framed]



Above the Pines, 2021

Etching : Edition of 5
H115mm W185mm [framed]
£145 each [framed]

POEMS BY SARAH SALWAY

The three poems reproduced below are part of a larger collection written by Sarah Salway in response to work created by Perienne Christian for her residency exhibition. For the complete collection of the poems, together with the works which inspired them, please see the accompanying publication *Alive in the Landscape ~ Dreaming a New Dream* published by Galloper-Sands and the Alde Valley Spring Festival Ltd.



FOR *DREAMING*

The plant collector

sleeps with one eye open
so as not to miss a moment
of the world's beauty
bark peeling like snakeskin,
fresh parchment petals,
uptwist of lily,
lion's tongue of iris,
but then to dream of birdsong
like the skylark from home,
daisies in the churchyard,
the river's silver glimmer,
before waking to a fresh morning
on the silk route, every day
a search for one more miracle.

© Sarah Salway. August 2022.



FOR ORB

Does a ton of feathers weigh the same as a ton of bricks?

Words drop like feathers,
I've never told anyone this before....
trails of conversation
like white clouds float behind us,
when *I've been thinking...*
weighs as much as *Is that an egret?*
We take secret phone calls
we can't bring back to the party,
medication... safe... so sorry...
but when you're listening so hard
and being heard back,
Do you remember...
it makes you vulnerable,
it makes you stronger than you've ever been,
I care for you so much...
because all of us tending the fire
have flown to the sun,
guide each other safely back to land.

© Sarah Salway. August 2022.



FOR *SEEING LIGHT*

Seeing light

at first light
before the sun's treasury
burns our path to gold
we lick our fingers
to feel how the teasing sky
will play games
with the rest of our day

the inky secrets
of our dreams leak
away with every sip
of tea, fiery love
and cryptic sorrows
tempered with a dash
of milk

open the window
we can do this

© Sarah Salway. August 2022.

Galloper-Sands is the art gallery for The Alde Valley Spring Festival Ltd
Company No 7592977 www.aldevalleyspringfestival.co.uk
White House Farm, Great Glemham, Suffolk IP17 1LS
E enquiries@galloper-sands.co.uk T [00 44] 1728 663 531
Instagram : @gallopersands / @aldevalleyfestival

www.galloper-sands.co.uk