

Gallopers-Sands Collections

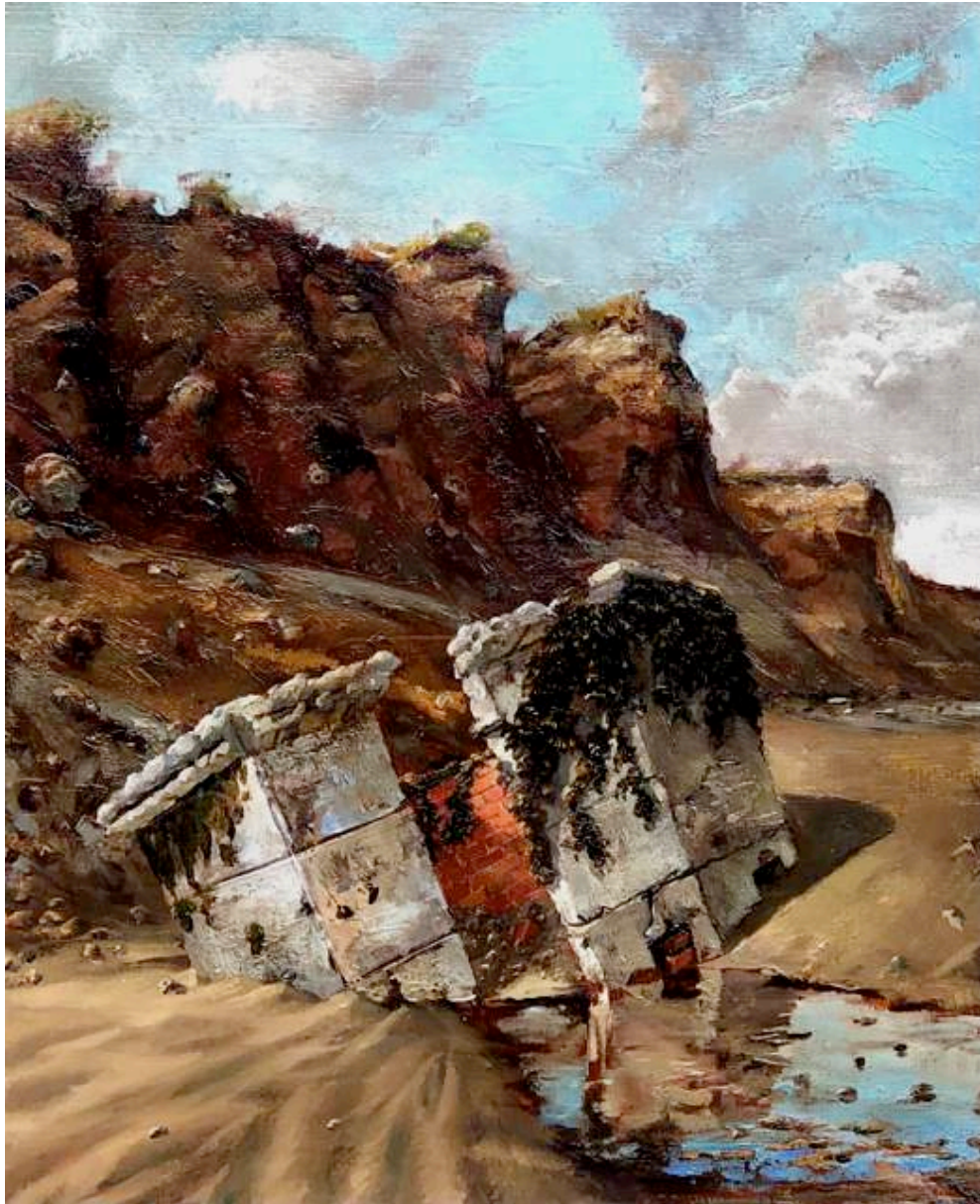
Julian Perry ~ Rising Sea Level Paintings

For all sales : enquiries@gallopers-sands.co.uk

Price List



Pill Box and Incoming Tide, 2021
Oil on panel. H1220mm W1220mm.
£16,000



Inverted Pill Box, 2021.

Oil on panel. H330mm W270mm.

£4,800



Suffolk Cliffs, 2010.

Oil on panel. H900mm W750mm.

£5,800

THE STATIONS

The following eight works were shown in *There Rolls the Deep – The Rising Sea Level Paintings* at Southampton City Art Gallery in Spring and Summer 2022. They were shown as *The Stations*, in conjunction with a beautiful and monumental quadriptych *Altarpiece to the Assumptin of CO2, 2021*. The artist explains the origin of *The Stations* on page 44 of the exhibition catalogue.

“In 2018 I was invited by Art Wise and the Cure Parkinson Trust to create a work of art in a 20 x 20 cm transparent cube. My response was to create a world in miniature that defied easy explanation : using a mirror to reflect a painting back at the viewer that would otherwise have been hidden. I wanted to create an engagement that rewarded the effort of trying to see the work, inspired in part by 17th-century Dutch perspective boxes seen at the National Gallery.

Each box contains two discrete images from the same coastal locations that relate to each other. All are scenes of coastal erosion or signifiers of erosion. The ‘stations’ provided a context to paint both landscapes and small studies of various ‘objets trouv ’, recovered from the beaches below eroding cliffs. These curiosities range from ‘no parking’ yellow lines to Second World War metal defences, buried after the war, several hundred yards from the cliff edge but now exposed by erosion and fallen on to the beach.”



*Tree Stump II + Seascape Moonlight, 2019. **

Oil on panel. H200mm W200mm D110mm.

£4,000

* The two paintings are set within a box of clear Perspex. The painting on the left is presented at the front of the box. The painting on the right is set behind it, facing inwards to the wall. It's image is reflected in a mirror set at the rear of the box.



*Rough Sea + Wall, 2019. **

Oil on panel. H200mm W200mm D110mm.

£4,000

* The two paintings are set within a box of clear Perspex. The painting on the left is presented at the front of the box. The painting on the right is set behind it, facing inwards to the wall. It's image is reflected in a mirror set at the rear of the box.



*Happisburgh Sea Defences + WW2 Pig Tail, 2020. **

Oil on panel. H200mm W200mm D110mm.

£4,000

* The two paintings are set within a box of clear Perspex. The painting on the left is presented at the front of the box. The painting on the right is set behind it, facing inwards to the wall. It's image is reflected in a mirror set at the rear of the box.



*Cliff path + Tree Stump, 2019. **

Oil on panel. H200mm W200mm D110mm.

£4,000

* The two paintings are set within a box of clear Perspex. The painting on the left is presented at the front of the box. The painting on the right is set behind it, facing inwards to the wall. It's image is reflected in a mirror set at the rear of the box.



Ruined Pillbox and Bladderwrack + Hemsby Shed, 2020.

Oil on panel. H200mm W200mm D110mm.

£4,000

* The two paintings are set within a box of clear Perspex. The painting on the left is presented at the front of the box. The painting on the right is set behind it, facing inwards to the wall. It's image is reflected in a mirror set at the rear of the box.



House at Easton Bavents + Dead Trees on Beach, 2020.

Oil on panel. H200mm W200mm D110mm.

£4,000

* The two paintings are set within a box of clear Perspex. The painting on the left is presented at the front of the box. The painting on the right is set behind it, facing inwards to the wall. It's image is reflected in a mirror set at the rear of the box.



Concrete Sea Defences Happisburgh + Beach at Dunwich, 2020.

Oil on panel. H200mm W200mm D110mm.

£4,000

* The two paintings are set within a box of clear Perspex. The painting on the left is presented at the front of the box. The painting on the right is set behind it, facing inwards to the wall. It's image is reflected in a mirror set at the rear of the box.



Abandoned Yorkshire Barns + Tree on Rocks, 2020.

Oil on panel. H200mm W200mm D110mm.

£4,000

* The two paintings are set within a box of clear Perspex. The painting on the left is presented at the front of the box. The painting on the right is set behind it, facing inwards to the wall. It's image is reflected in a mirror set at the rear of the box.



Seascape, 2021.

Oil on panel. H230mm W390mm.

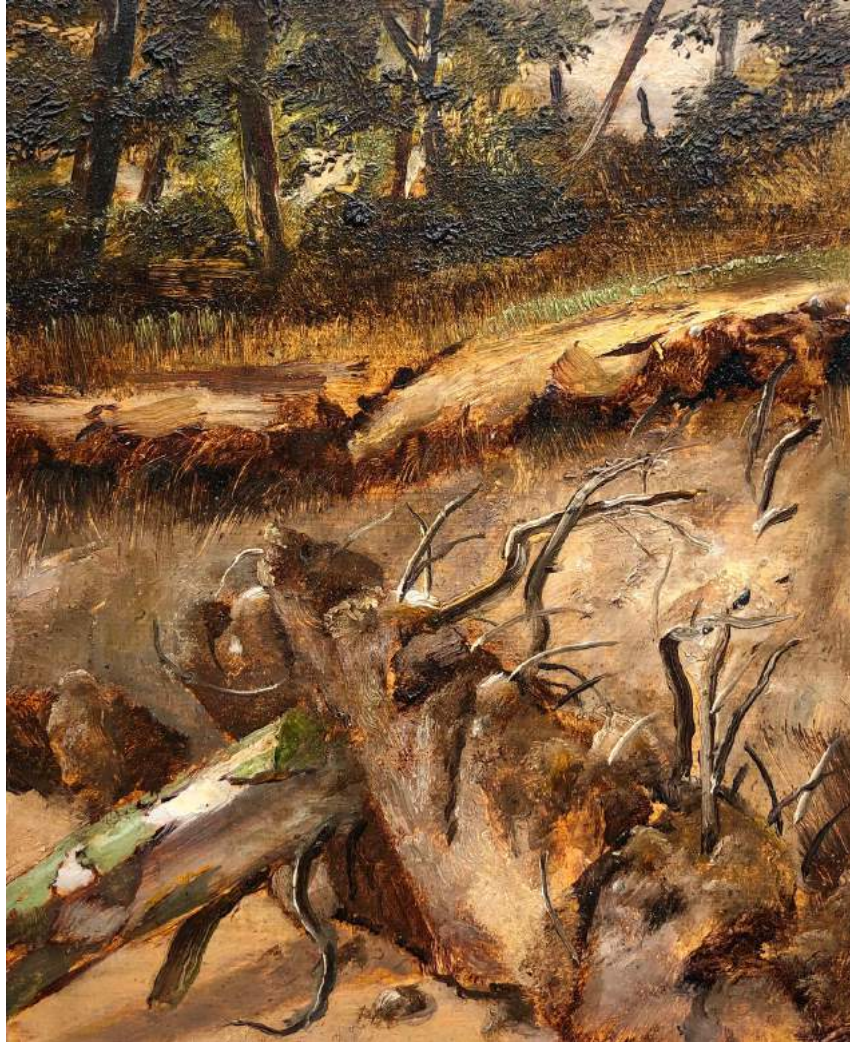
£3,800



Footpath at Covehithe, 2019.

Oil on panel. H140mm W200mm.

£1,500



Small Tree on Beach, 2021.

Oil on panel. H150mm W120mm.

£1,200

Gallopers-Sands Gallery

Gallopers-Sands is the contemporary art gallery for The Alde Valley Spring Festival. This price list for *Rising Sea Level Paintings* accompanies a limited edition catalogue that has been published to coincide with an exhibition of paintings of veteran pollard trees by Julian Perry as part of a residency that extended through the Spring and Summer of 2022.

The Alde Valley Spring Festival Ltd
Company No 7592977 www.aldevalleyspringfestival.co.uk
White House Farm, Great Glemham, Suffolk IP17 1LS

enquiries@gallopers-sands.co.uk T [00 44] 1728 663 531

GS

GALLOPER-SANDS

Fine Art & Artisan Crafts

www.gallopers-sands.co.uk

@gallopersands / @aldevalleyfestival